

9 SEPTEMBER 2021
BRITISH MOTOR MUSEUM,
GAYDON, WARWICKSHIRE



PCB

The logo for PCB Design & Manufacturing Live. It features the letters "PCB" in a large, white, sans-serif font. To the right of the letters is a white graphic of a PCB layout, showing various components and traces, all contained within a white arrow shape pointing to the right.

DESIGN & MANUFACTURING LIVE
www.pcbdmlive.co.uk

MEDIA PACK

Brought to you by the publishers of

newelectronics

& the organisers of

The logo for the Engineering Design Show, consisting of a grid of colored dots in shades of blue, yellow, and red. To the right of the dots, the words "ENGINEERING DESIGN SHOW" are written in a bold, sans-serif font.
**ENGINEERING
DESIGN SHOW**

**ENGINEERING
SOLUTIONS LIVE**



PCB



DESIGN & MANUFACTURING LIVE

PCB Design & Manufacturing Live returns to Gaydon in September 2021 providing a dedicated show for exhibitors and visitors demanding a short, sharp and effective “roadshow” style of event.

Staged again at The British Motor Museum in Gaydon, Warwickshire-based on the same site as 13,000 Jaguar Land Rover engineers and managers plus Aston Martin Lagonda is also within walking distance.

Over 600 designers attended PCB 2020 and were delighted with what they saw, interacting with the 80 specialist exhibitors and attending hands on Workshops.

Exhibitors were pleased with the quantity and quality of visitors they met, visitors thought it was time efficient and appreciated the free breakfast and free parking to make attendance a pleasant and valuable experience.

Brought to you by the publishers of New Electronics and Eureka magazines, you can be assured we will continue to deliver a quality audience of designers and design managers.

So on September 9 2021 from 8.30am to 2.30pm we will be hosting PCB Live, co located with Engineering Materials Live and FAST Live, under the Engineering Solutions brand.

In addition to the roadshow style exhibition, we will be hosting technical workshops led by senior electronics engineers from “thought leadership” organisations.

We look forward to welcoming you as an exhibitor at PCB Design & Manufacturing Live.

James Creber
Sales Manager

87% would attend
PCBDML again

83% would
recommend PCBDML
to a colleague

82% rated their
experience as Good
to Excellent

70% are directly
responsible for
purchasing or
specifying electronic
components

90% are design
engineers or
managers

www.pcbdmlive.co.uk



WHY EXHIBIT?

PCB Design & Manufacture Live is a unique 'Roadshow' style event providing a cost effective way to engage with designers & buyers of electronic components.

5,000+ electronic design engineers are located within an hours drive of the venue

90% of these are registered to receive New Electronics

Low cost participation & high quality audience combine to deliver great value

All stands are the same size; 3m x 1m shell scheme with fascia and name board

Easy to manage – set up the evening before or the morning of the event

Free breakfast roll & tea/coffee for all visitors on arrival

Co-located with Engineering Materials Live and FAST, an audience of 900 visitors is expected for PCB 2021

Visitor attendance by pre-registration only ensures a high quality & relevant audience

www.pcbdmllive.co.uk

CONTACT

James Creber

Sales Manager

james.creber@markallengroup.com

07983 989684

Peter Ring

Publisher

peter.ring@markallengroup.com

07967 169102

Neil Tyler

Editor

neil.tyler@markallengroup.com

01322 221144

About the organisers

MA Business publishes New Electronics magazine, the UK's market leading title for electronic design engineers and the same team that attracts more than 4,000 design engineers to the outstandingly successful Electronics & Embedded Design Show every October.



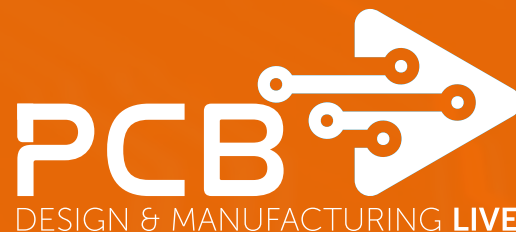
MA BUSINESS

A MARK ALLEN GROUP COMPANY

www.markallengroup.com

Hawley Mill, Hawley Road,
Dartford, Kent, DA2 7TJ
01322 221144

NEXT EVENT



ENGINEERING SOLUTIONS LIVE

9 SEPTEMBER 2021

British Motor Museum, Gaydon
Warwickshire

Price to exhibit

£1645

New Electronics advertiser price
(all stands 3m wide x 1m deep shell
scheme with fascia & name board)

£1295

Add a practical workshop session
(30 min session + 10 min Q&A)

£750